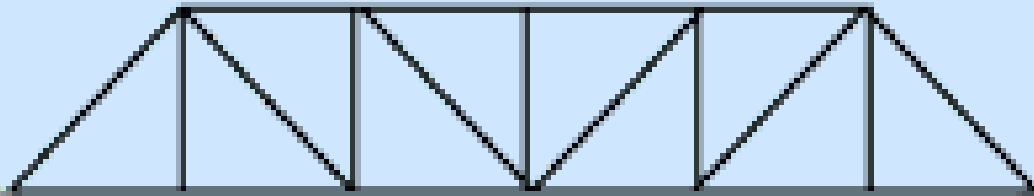


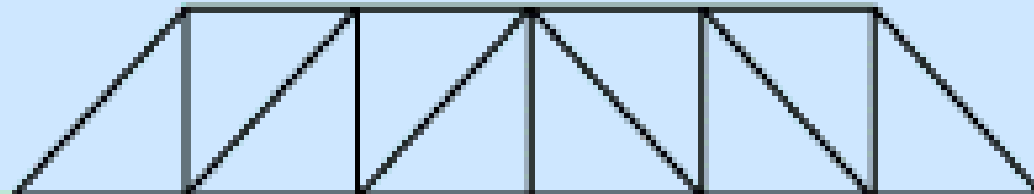


Why are most Truss Bridges
symmetrical?

TRUSS BRIDGES



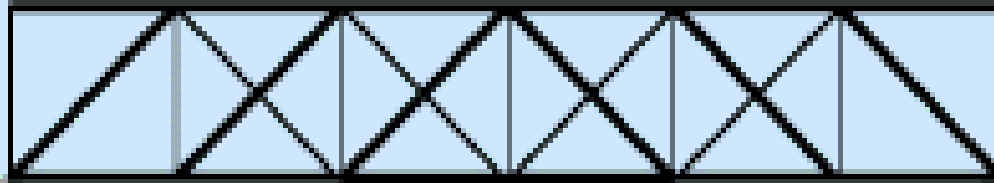
PRATT TRUSS



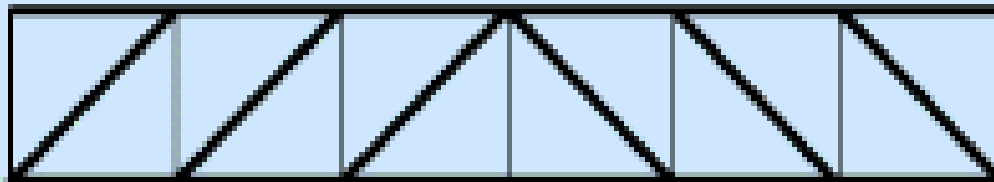
HOWE TRUSS



TRUSS BRIDGES

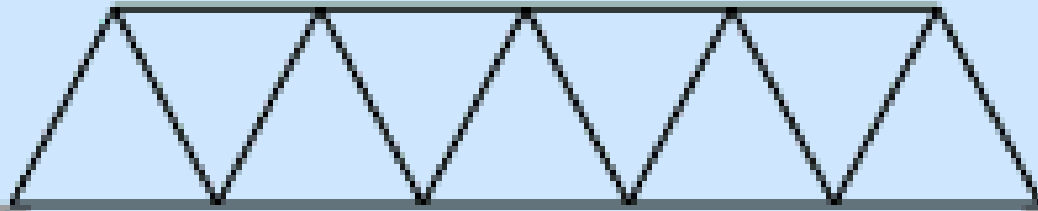


HOWE TRUSS (with counter braces)

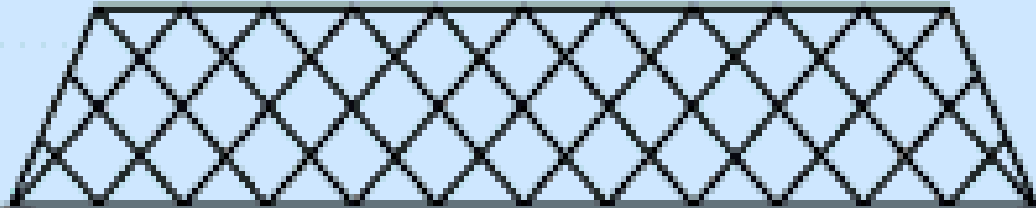


HOWE TRUSS (wooden brace/iron rod)

TRUSS BRIDGES



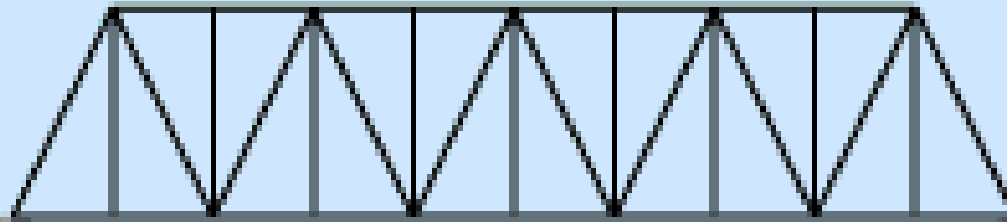
WARREN TRUSS



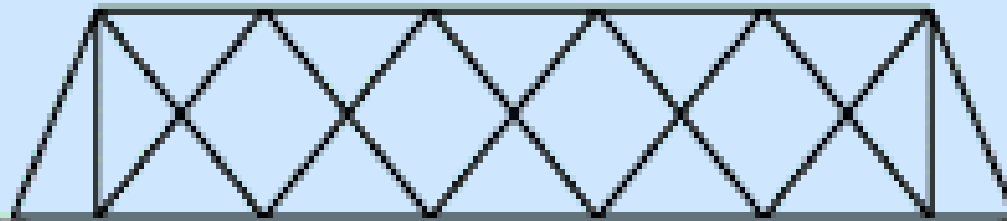
QUADRILATERAL WARREN TRUSS



TRUSS BRIDGES



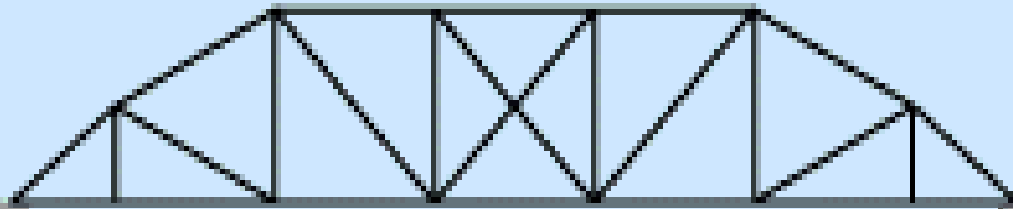
SUBDIVIDED WARREN TRUSS



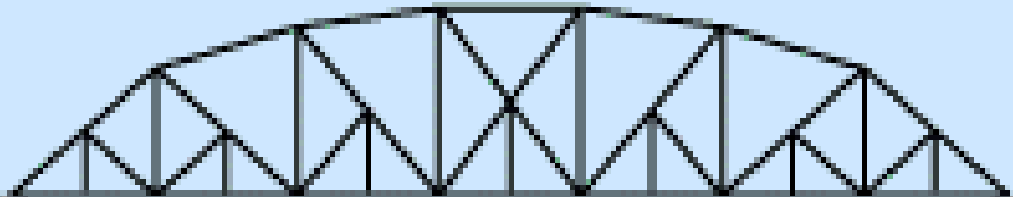
DOUBLE WARREN TRUSS



TRUSS BRIDGES



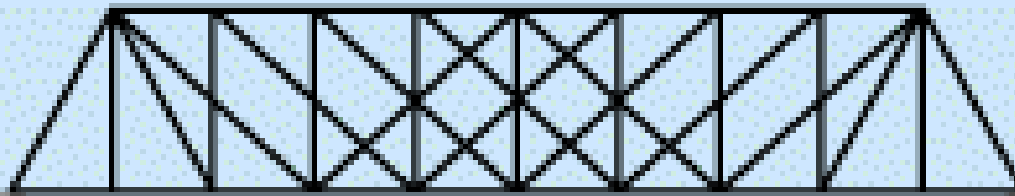
PARKER "CAMELBACK" (PRATT) TRUSS



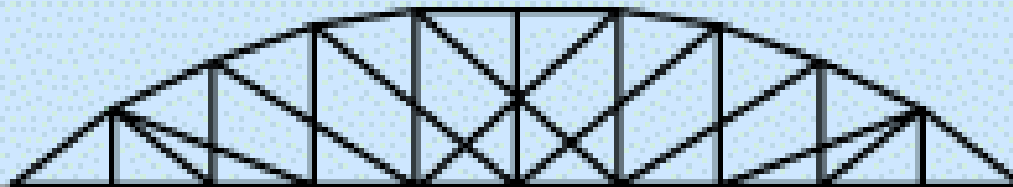
PENNSYLVANIA-PETIT (PRATT) TRUSS



TRUSS BRIDGES



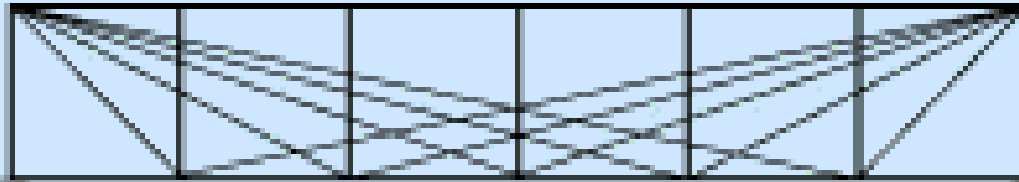
WHIPPLE TRAPEZOIDAL TRUSS



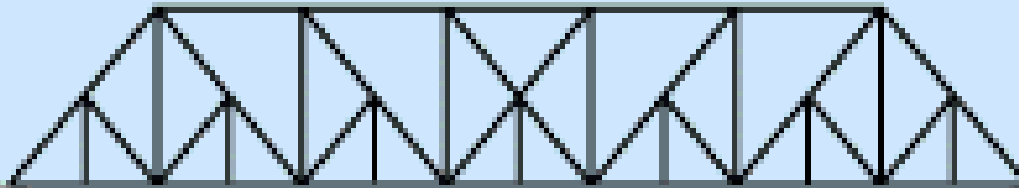
WHIPPLE BOWSTRING TRUSS



TRUSS BRIDGES



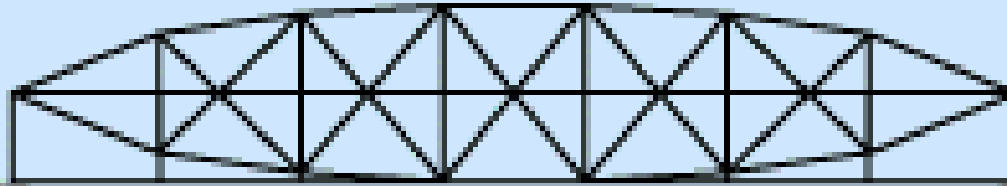
BOLLMAN TRUSS



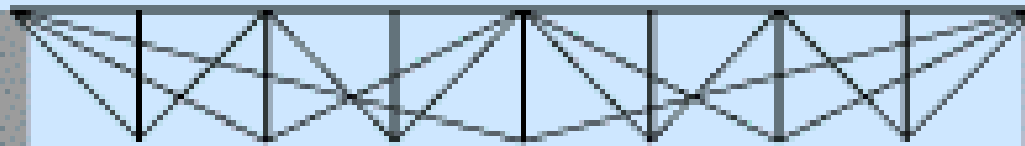
BALTIMORE (PRATT) TRUSS



TRUSS BRIDGES



LENTICULAR TRUSS



FINK TRUSS

