



CHAPTER 3—SKILL SHEET 2: READING TOPOGRAPHIC MAPS

A topographic, or contour, map is a two-dimensional model of the three-dimensional shape of the land surface. On a topographic map, isolines connect points of equal elevation. Contour maps also include a wide variety of geographic information. You should try to imagine the topography as you look at the contour lines on these maps.

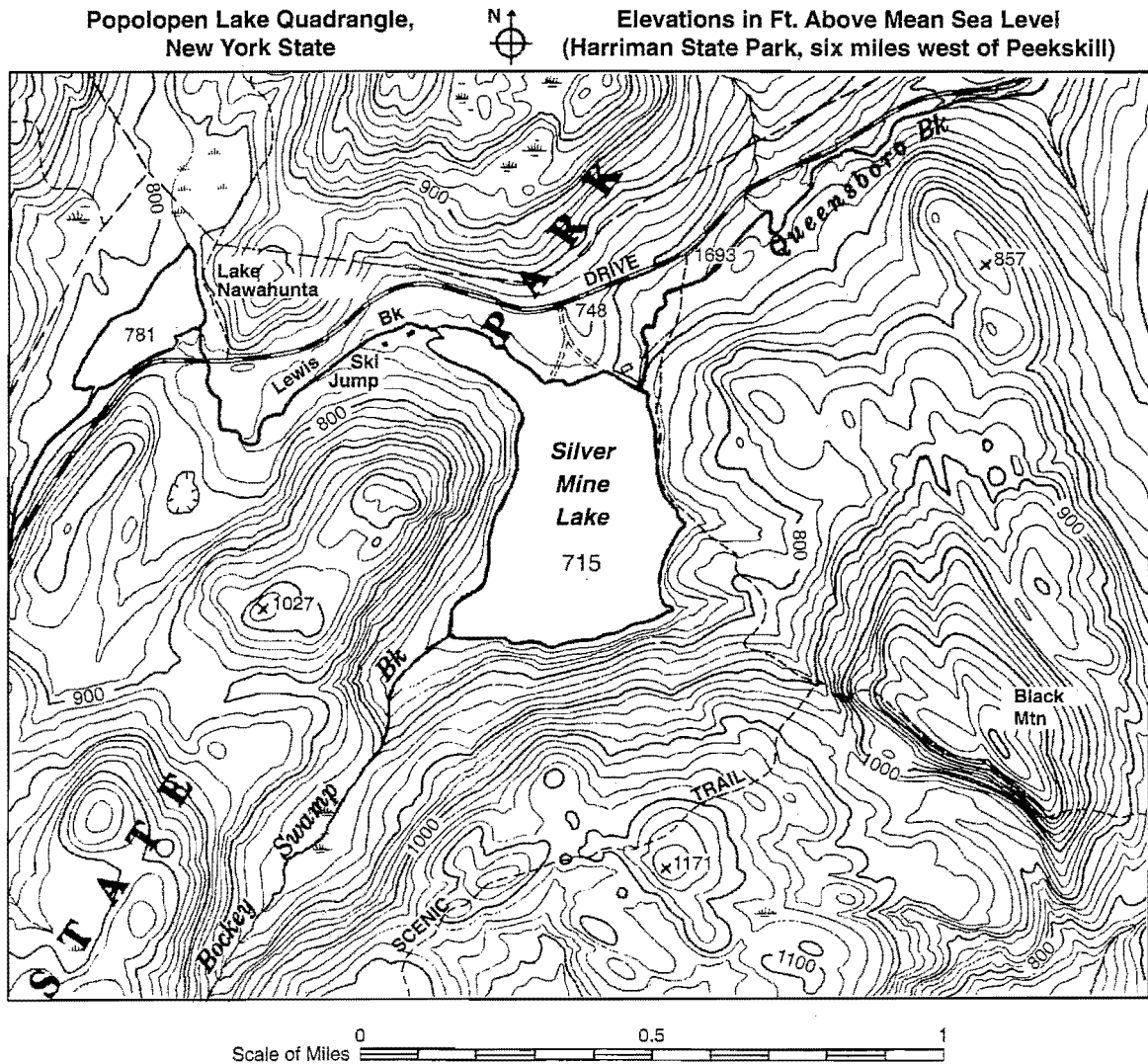


FIGURE 3-4.

Use the map segment in Figure 3-4 to answer the following questions.

1. What named geographic feature is in the southeastern part of the map?

2. What is the length of Lake Nawahunta?

3. What is the change in elevation between Silver Mine Lake and Lake Nawahunta?

4. What is the contour interval on this map? _____
5. What is the elevation of the top of Black Mountain? _____
6. On the flat area south of Lewis Brook, what type of landform is indicated by the closed circle with little lines (hachures) inside?

7. What is the elevation at the center of the feature mentioned in question 6?

8. What is the lowest elevation represented on this map and where is it located?

9. Where is the steepest slope on this map?

10. In what direction does Bockey Swamp Brook flow? _____
11. What shape do contour lines make where they cross a stream, such as Bockey Swamp Brook?

12. Only two buildings are shown on this map. Where are they?

13. Describe general changes in elevation you would find if you were walking on the part of the trail shown between the words "SCENIC" and "TRAIL" on the map.

14. What probably would be the most difficult part of walking all the way around the shoreline of Lake Nawahunta?

15. A friend has called you on her cell phone. She was hiking the Scenic Trail and injured herself rather badly. Fortunately, she has a map like the one above. She is located at the 800-foot contour on the trail. You have called an ambulance. They know how to get to Queensboro Brook but need detailed directions about how to get a stretcher and medical personnel to your friend. They do not have a topographic map. Write detailed directions to be read to the ambulance crew.

